

ONIX is a consulting firm that focuses on providing the Federal Government and its large Prime Contractors with engineering solutions. With Corporate Headquarters located in Coraopolis, Pennsylvania and additional regional offices in Washington D.C. and Michigan, ONIX was incorporated as an S-Corporation in January, 1996. ONIX is a small business enterprise, a small disadvantaged business, a woman business enterprise and a HUBZone firm.

ONIX has established itself as a valuable asset within the commissioning, retro-commissioning and performance analytics industry and has provided or is presently providing ongoing commissioning and data analytics / performance monitoring services for several large-scale, highly complex Federal facility projects and large DOD contractors.

Data Analytics / Performance Monitoring Services:

ONIX brings added value to its Federal Government and Large Prime Contractor engagements via a data analytics technology solution providing persistent commissioning and building optimization. Utilizing a systematic investigative and corrective process to address building issues, ONIX provides baseline and energy analysis by monitoring energy consumption; conducting electronic measurement and verification; providing customized user dashboards; and targeting opportunities for energy savings and cost savings. ONIX implements SkySpark automated fault detection and predictive maintenance solutions via performance monitoring programs. SkySpark is an intelligent software tool used to data mine various BAS networks or raw collected data for executive level summary reports and facility performance information without the need for complex navigation of BAS systems or raw data.



The Result:

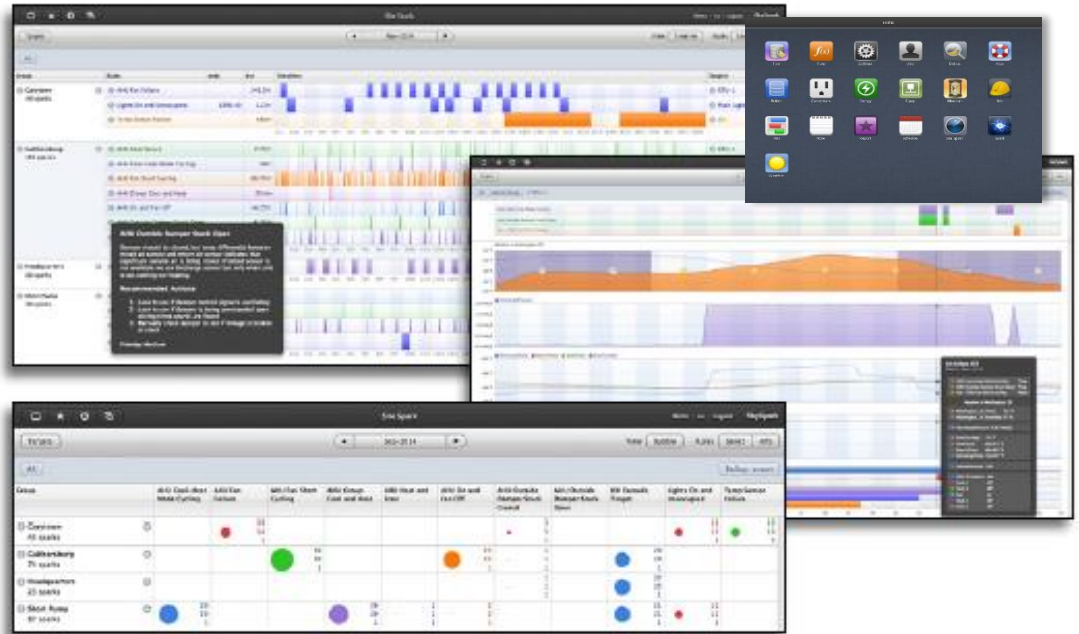
An automated system that identifies energy performance issues and estimated energy impact, delivers equipment fault reporting, promotes streamlined operations, performs ongoing operational verification, provides energy management tools, and provides insight and opportunity for risk mitigation and reduction of capital expenditures. SkySpark performance monitoring systems:

- ☐ **SkySpark operates behind the Federal Government firewall**
- ☐ **Utilize custom performance based “Sparks” to identify and quantify energy performance issues throughout each facility;**
- ☐ **Assist Facility Owners / Operators and Program Managers in the performance verification of completed RCx Projects; and**
- ☐ **Deliver user-friendly tools to the facility managers for performance management, reporting, trend data analysis, and historical data analytics.**

SkySpark's fast, powerful and infinitely flexible analytics can provide results not possible with other tools.

SiteSpark App

Shows analytic results as timelines and bubble charts showing timing, duration, frequency, and cost of issues.



KPI App

Automatically calculates key performance indicators and presents them in "candle charts".



Energy App

Provides a comprehensive suite for analysis of energy resources including electrical demand, consumption, cost, as well as water and gas usage. The unique Operations view automatically aligns energy usage data with equipment operational status showing you exactly how your equipment systems are affecting energy use.

